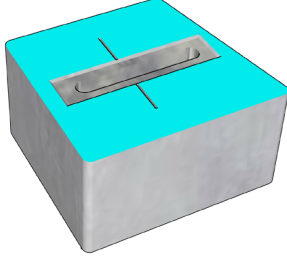


Unit Details



5/7" x 10.5" x 6"



10/12" x 10.5" x 6"



14/16" x 10.5" x 6"

Feature Sets



FreeStanding Walls



Columns



Planters



Stairways



Sitting Benches



Fire Pits



Barbeques



Stonewall® Orana is Patent Pending in the USA and a licensed product of WestBlock Systems



Proudly Offered By:

WESTBLOCK SYSTEMS®

www.westblocksystems.com



STONEWALL® ORANA

Built to Welcome. Designed to Endure.

StoneWall® Orana is an outdoor living system used to create beautiful and durable hardscape features reminiscent of handcrafted stone. StoneWall® Orana provides a large variety of design options that allow creation of a backyard retreat that will be the envy of the neighborhood.

— Easily Create —

- Retaining walls
- Parapets
- Freestanding
- Seating walls
- Columns
- Fire pits
- Fireplaces
- BBQ's
- Planters
- Fountains
- And more



Installation

1. Excavate the Base Trench*

Excavate trench 20" wide and 12" deep along the length of wall, assuring depth provides proper unit embedment. On sloped sites step up 6" to change elevation.

2. Prepare the Base Leveling Pad & Compact*

Place 6" of 3/4"-1/2" crushed aggregate in the trench. Level, then compact to 95% or greater of standard proctor.

3. Set & Align Base Course*

Starting at lowest elevation, ideally a corner, place and level the block using a string line and 2' level. Follow the suggested patterns as shown, or create your own. Make sure the recess next to the center core is placed top up. Place alignment plugs into the center core following the guidelines below.

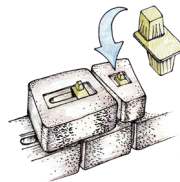
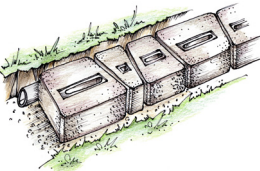
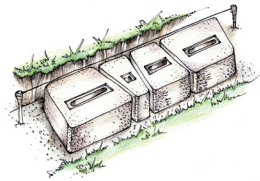
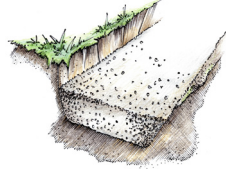
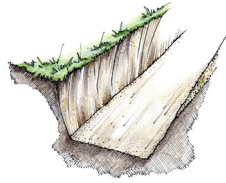
Lay out the entire bottom course before proceeding to the next courses. Place perforated drain pipe onto leveling pad, behind base course (retaining wall) then backfill, 12" deep, to top of wall with crushed aggregate. Stack additional courses altering the pattern course to course. Repeat the steps to reach the desired wall.

4. 3-Way Alignment Plug (3WAP)*

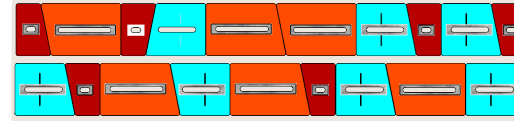
After stacking the block course, place a 3WAP into the core of each unit, assuring that the flange on the plug rests within the recess adjacent to the core. Orient the plug to achieve your desired wall batter. Use the setback position for retaining walls to achieve a batter, the vertical position for bench walls, and the reveal position to occasionally highlight a unit.

5. Capping the Wall*

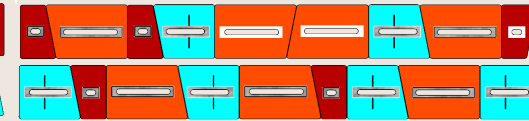
Adhere clean and dry cap blocks to the wall using silicon concrete construction adhesive. Place cap flush to the wall face or with an overhang.



Wall Layout



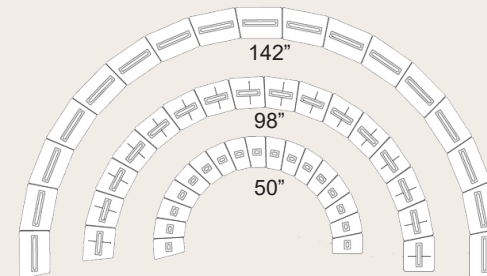
Courses 1 & 2



Courses 3 & 4

Planning For Radius Curves

- Build the wall out from the corner.
- Determine the desired radius and then select the block combination that matches this radius.
- CONVEX curves show the WIDE FACE, CONCAVE corners show the SMALL FACE.
- A 100" radius maintains equal use of the three trapezoid shapes.
- As the wall panel approaches the curve, place the desired radius pattern at the end of the straight wall section.
- After completing the radius curve, return to the beginning of the desired wall panel pattern.
- NOTE: If building a wall with the 3WAP in the setback position, the radius of the corner will decrease 1" per vertical foot of wall, creating a lateral shift of the blocks on each course.

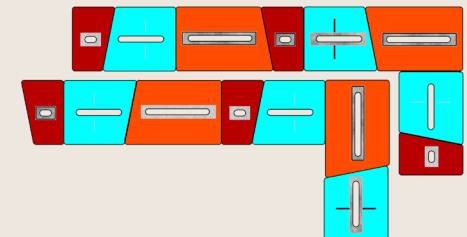


Radius or 90° corners

Radius varies with unit selection

Corner Installation

- Place the square side of the unit at the tip of the corner.
- Build the wall panel section in either direction from that corner point.
- Alternate the square sided units on each course to assure that no vertical joints are created.



*The installation instructions and illustrations shown are a basic overview of the StoneWall II installation. Because of the variety of applications, please refer to local building codes or visit us online at westblocksystems.com.